



# **MRA GUIDE TO IDENTIFYING FREQUENTLY STOLEN GOODS**



# ABOUT US


**The Metal Merchants Association was registered as an employer's association in 1942 during WWII when South Africa introduced the Strategic Metals Act which severely limited the movement of secondary metal for recycling.**

In 1999 the association changed its name to Metal Recyclers Association of South Africa (MRA) to accurately depict its involvement in the metal recycling industry. The constitution was amended and registered with the Department of Labour. The association adopted a code of conduct that commits its members to the highest degree of business ethics.

Today the MRA has a diverse membership base made up of organisations that are engaged in the collection and processing of more than 80% of all scrap metal in South Africa for beneficiation by downstream industry.

## ASSOCIATION ACTIVITIES

“Members vote in a new executive committee at each annual general meeting, held within 6 months of 31 March each year. This committee elects from within its ranks, a chair person; vice-chair and treasurer. The function of the committee is to represent members interests by managing the challenges faced by the scrap metal recycling industry by...”

- Assisting business and law enforcement through the introduction of anti-theft measures.
  - Co-operating with consumers to ensure that local industry requirements are met.
  - Ensuring that government's legislative initiatives are correctly researched.
  - Promoting the positive contribution of the metal recycling industry.
  - Safety, health and environmental issues relating to the industry.
  - Ensuring that members' businesses are conducted in an environmentally friendly manner.
  - Policing members' adherence to the association's code of conduct.
  - Ensuring members conduct their businesses in accordance with all applicable government, provincial and local legislation.
- 



## CODE OF CONDUCT

- To strive to promote and improve the image and standards of the Metal Recyclers Association of South Africa.
- To provide the highest level of service to our customers.
- To trade in an ethical manner according to accepted business practice.
- To provide safe and pleasant working conditions for my employees.
- To uphold the concept of free enterprise and service the community.
- To act in accordance with the current legislation relating to the trading of scrap metal and to promote the protection of the environment.
- To avoid purchasing or handling materials suspected of having been stolen.
- To co-operate with and support all persons in an endeavour to stop unlawful practices.



# FREQUENTLY STOLEN MATERIAL



**CRIME LINE**  
**0800 112 722**

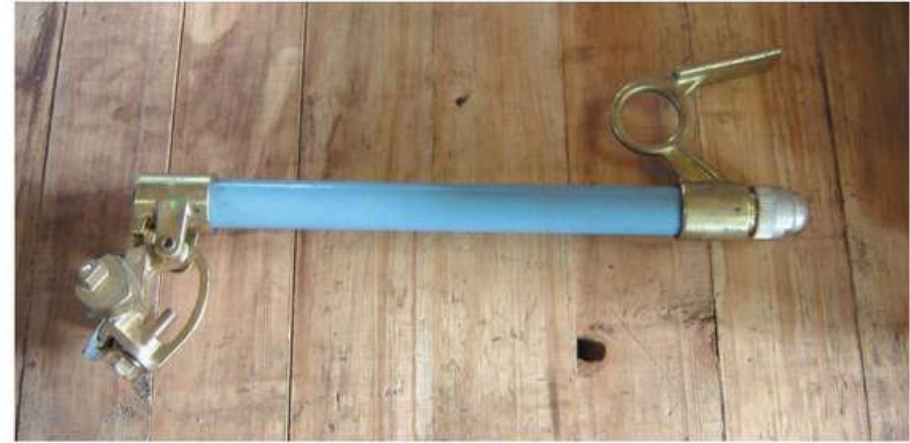
(Information source: Identification Guide to Frequently Stolen Material)

<https://mra.co.za/wp-content/uploads/2022/05/Eskom-Catalogue-of-Frequently-Stolen-Items.pdf>

# TRANSFORMERS



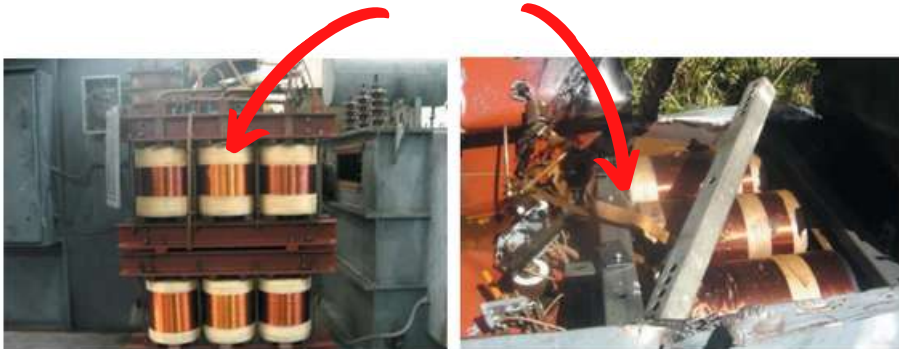
# FUSE LINKS



# METER BOXES

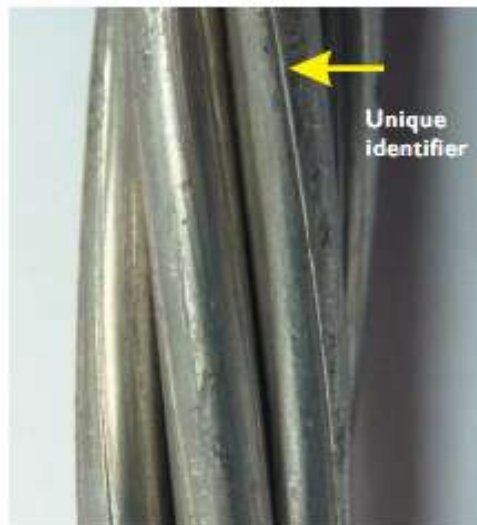
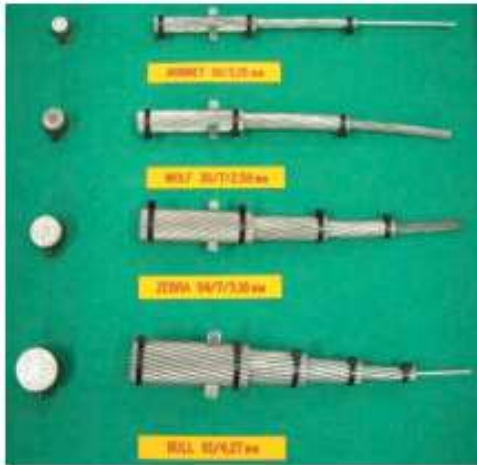


# COPPER COILS INSIDE A TRANSFORMER



# CONDUCTORS

## ALUMINIUM CONDUCTORS



## COVERED CONDUCTORS

### ALUMINIUM CONDUCTOR



### COPPER CONDUCTOR

# CABLES



**3 CORE  
CABLE**



**4 CORE  
CABLE**



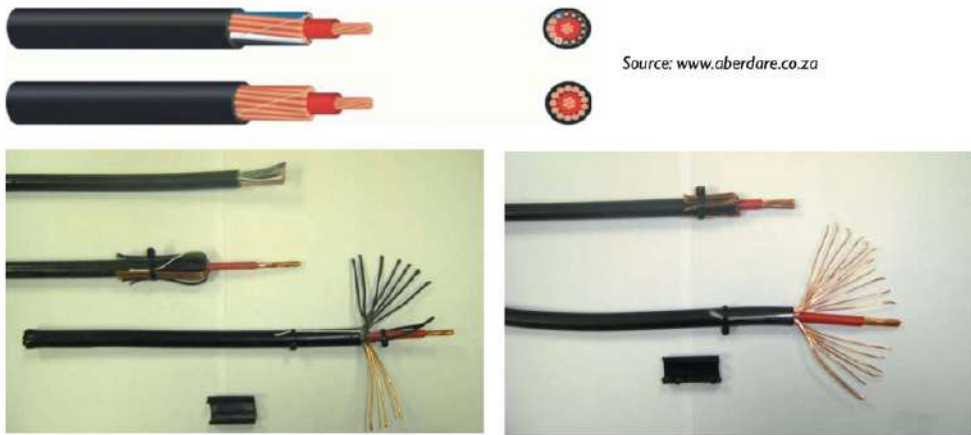
**MULTI CORE  
CABLE**

# COPPER EARTHING



# AIRDAC & AERIAL BUNDLE

## AIRDAC



## AERIAL BUNDLE



# INSULATORS





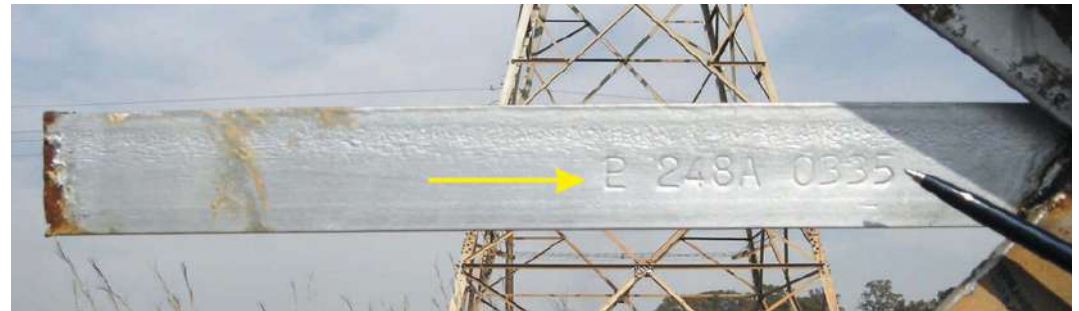
# VIBRATION DAMPERS AND STAY RODS



# CLAMPS AND JOINTS



# PYLON LATTICES AND CROSS MEMBERS



# SUBSTATIONS & ADDITIONAL SUBSTATION EQUIPMENT



# Telkom

## FREQUENTLY STOLEN MATERIAL



**CRIME LINE**  
**0800 124 000**

(Information source: Telkom Cable Identification)

<https://mra.co.za/wp-content/uploads/2022/05/Telkom-Cable-Poster2.pdf>



**Burnt Cable**



**Z Screen Cable  
Blue PVC Coated**



**Junction Cable**



**Aerial Cable  
Steel Suspension**



**Burnt Cable**



**Indoor Cables  
Cream PVC**



**No Insulated  
Covering**



**Open Wire**



**Junction Cables**



**Solar Panel**



**Cable with  
No Covering**



**Burnt Cable**

**TRANSNET**



# **FREQUENTLY STOLEN MATERIAL**



**CRIME LINE**  
**0800 003 056**

(Information source: Catalogue of Frequently Stolen Material)

<https://mra.co.za/wp-content/uploads/2022/05/Transnet-Catalogue-of-Frequently-Stolen-Items.pdf>

# TRANSNET

FREQUENTLY STOLEN MATERIAL

## BRAKE LOCK



## COUPLER KNUCKLE



## COUPLER



# TRANSNET CABLES

80mm<sup>2</sup>



Catenary Wire 80mm<sup>2</sup>: Unit made from copper

100mm<sup>2</sup>



Catenary Wire 100mm<sup>2</sup>: Unit made from copper

160mm<sup>2</sup>



Feeder Wire 160mm<sup>2</sup>: Unit made from aluminium

500mm<sup>2</sup>



Feeder Wire 500mm<sup>2</sup>: Unit made from aluminium

800mm<sup>2</sup>



Feeder Wire 800mm<sup>2</sup>: Unit made from aluminium

160mm<sup>2</sup>



Catenary Wire 160mm<sup>2</sup>: Unit made from copper

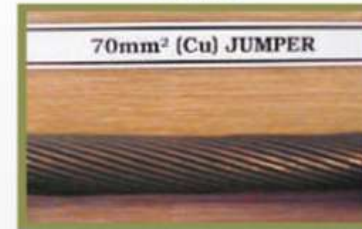
162mm<sup>2</sup>



Catenary Wire 162mm<sup>2</sup>: Unit made from copper

## ALL FEEDER WIRE

70mm<sup>2</sup>



Jumper Wire 70mm<sup>2</sup>: Unit made from copper

160mm<sup>2</sup>



Jumper Wire 160mm<sup>2</sup>: Unit made from copper

## ALL CATENARY WIRE

## ALL JUMPER WIRE

107mm<sup>2</sup>



Contact Wire 107mm<sup>2</sup>: Unit made from copper

161mm<sup>2</sup>



Contact Wire 161mm<sup>2</sup>: Unit made from copper

## ALL CONTACT WIRE

## TRACK FEEDER CABLE



95mm Track Feeder Cable



# TRANSNET

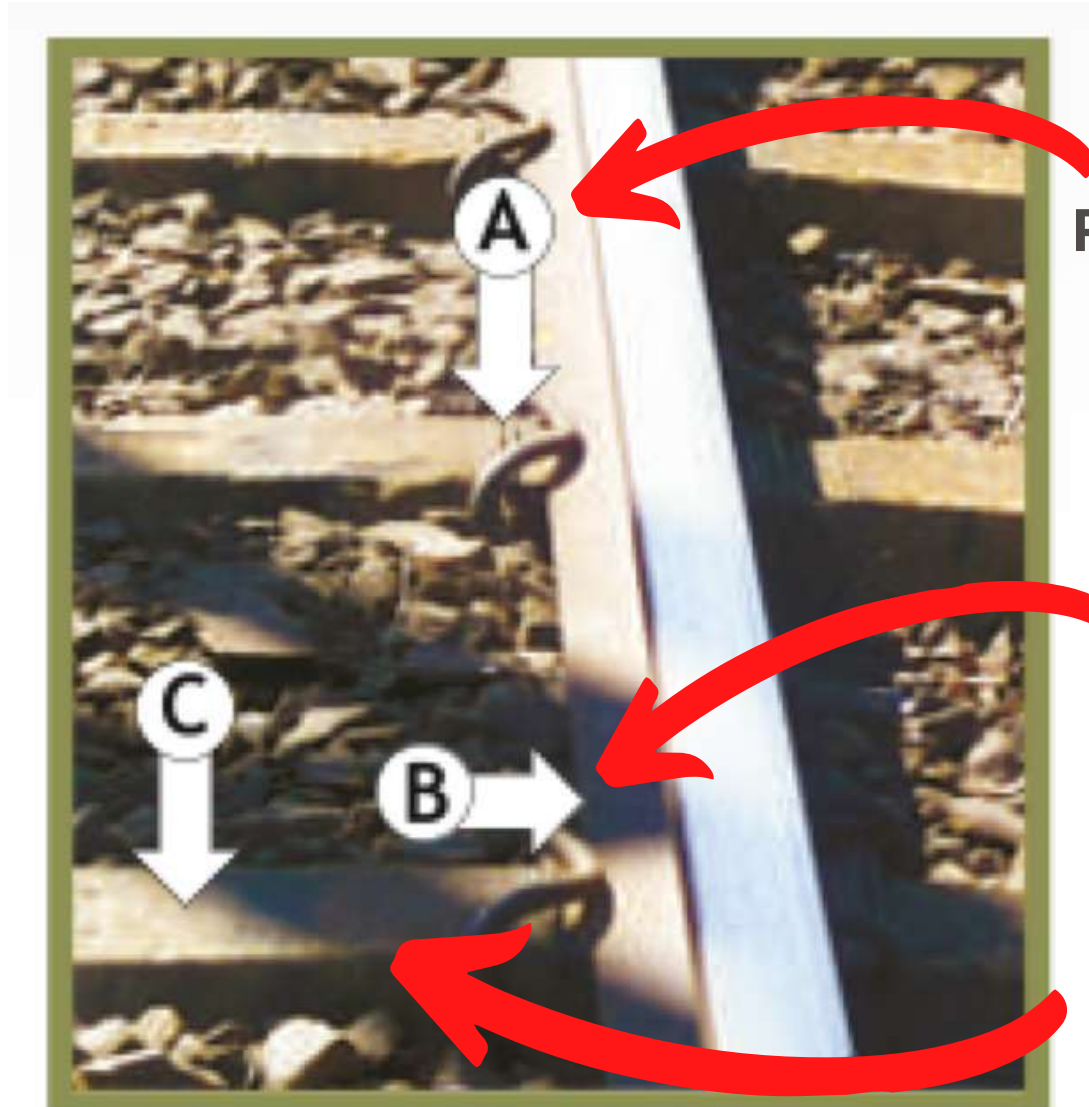
## RAIL INFRASTRUCTURE



**METAL SLEEPER**



**RAIL CHAIR**



**PENDROL SPRING**

**RAIL LINE**

**SLEEPER**

# TRANSNET



**LOCOMOTIVE  
BATTERY**



**WHITE METAL  
BEARING**



**- END -**

